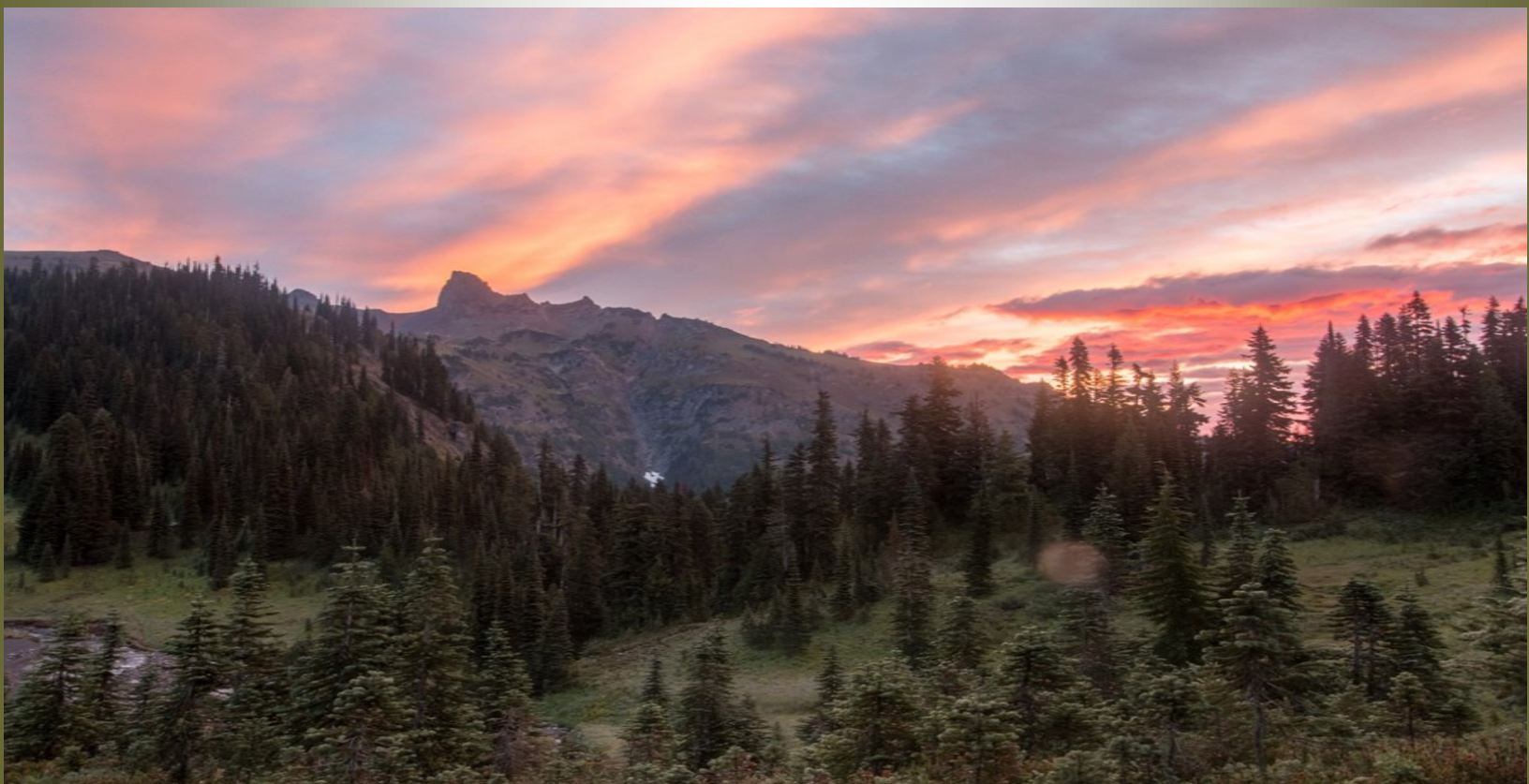


THE WHISPERING SHAFT

Keeping the Tradition Alive.....



**Quarterly Chronicle of the
Carolina Traditional Archers
Spring 2017**



www.thecta.org

CAROLINA TRADITIONAL ARCHERS

MISSION STATEMENT

The mission of the Carolina Traditional Archers is the preservation and promotion of the ancient art of traditional archery through club activities and educational interactions with others. Members will adhere to the highest ethical standards in their support, practice, promotion and preservation of traditional archery and bow hunting. The Carolina Traditional Archers support sound wildlife management principles and seek opportunities to aid conservation efforts.

Member of:



Officers

PRESIDENT

Drew Sumrell
drewsumrell@gmail.com

TREASURER

Theo Lynn
theoalynn@aol.com

VICE-PRESIDENT

SECRETARY

Mark Rickard
mrickcta@gmail.com

EDITOR

Martin Seeley
amymartin1999@yahoo.com

Board of Directors

Tom McRary
tommcrary@bellsouth.net

Amelia Bryan
amelia.catherine.23@gmail.com

Wil Bryan
rogue23@gmail.com

Mary Hamner
marychamner@gmail.com

Jeff Holchin
jeffreyholchin@gmail.com



Letter from the President



Members and friends of CTA,

It's hard to believe that the first quarter of 2017 is already behind us, but the year has started off well for CTA. We've had really good attendance at our first three shoots and are looking forward to a great weekend for our April Primitive Skills shoot and "Hand Made" silent auction. We've also had three very productive work days and have made some great progress on the range and in the club house. The response of members at our work days has been really good and I would like to thank all those who have spent a Saturday or two to help improve our club. Along with our tasks and great team work, we've had fun in the process. This bunch knows how to interlace some fun with the job at hand.

If you haven't been to the club recently, here's a few of the things we've gotten accomplished at our work days this year. We cut and cleaned up the down trees near the club house and replenished our firewood supply for the next couple of years. The steps up the bank were completed along with setting up several target butts outside to warm up before heading out on the range. Our tree stand construction on the range is well under way and we removed 20 more cubic yards of debris, trash and construction materials from the range and club house. Work has been done to shore up the bridge across the creek also. And during our last work day we installed new doors in the club house and painted two of the interior walls. WOW! Progress!

And, if we have a successful silent auction, we're going to proceed with new windows and shutters for the club house. That will be a welcomed improvement aesthetically and also improve the light and air flow in the club house. It's all very rewarding to see our progress, the teamwork to make it happen and the members stepping up to help in so many different ways. Some members can handle the physical labor, several have donated their cooking skills for meals, some have donated funds and some have offered great ideas. The board has tried to respond to the request and input from members, and hopefully everyone is appreciative of our progress as a club and our physical facilities. It will only continue to get better if our members continue to help make it happen.

Drew Sumrell - President

From the Editor.....

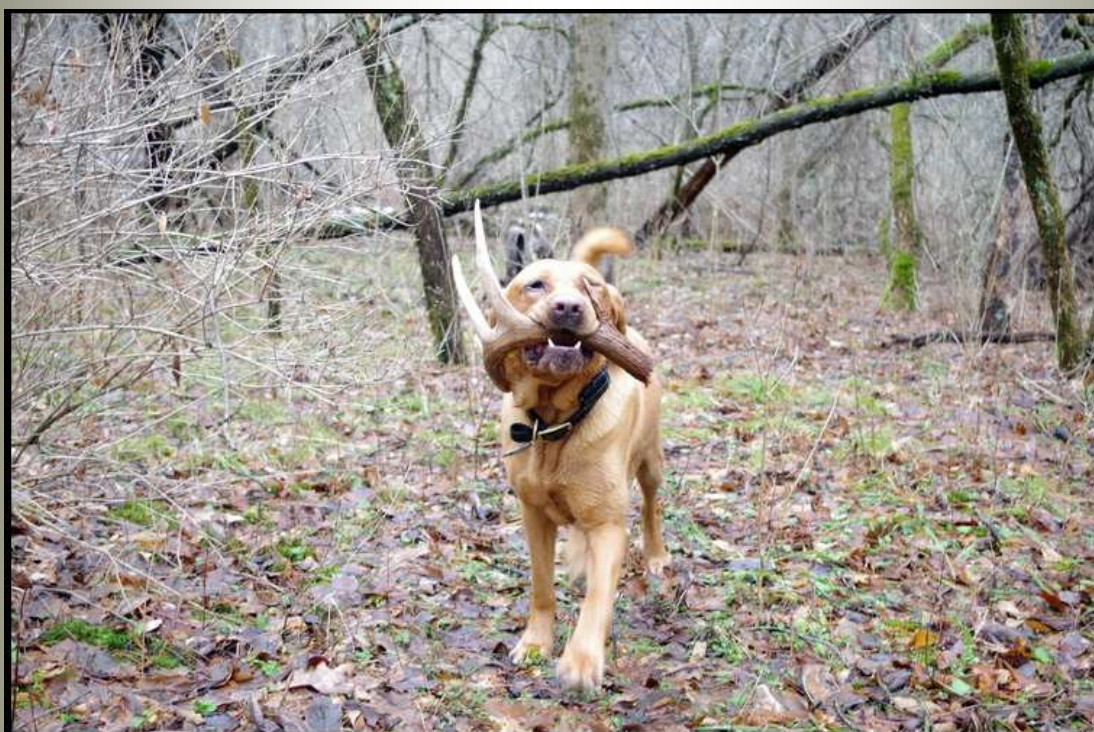
Shed hunting has certainly grown in popularity over the last few years, an activity that many enjoy over the winter and spring months. Included in this issue is some helpful hints to get you started in this activity.

While we are always looking for articles and pictures from our own members, if you encounter something interesting outside of our club, pass it along. As long as we have permission from the author, we can use it here and let others enjoy it as well. Just another avenue for us to continue improving our quarterly chronicle.

Here is a reminder on the harvest photo guidelines for submissions for our quarterly publication or website. Photos that do not meet these guidelines cannot be used.

1. Animal must be placed in a natural setting and position. (no conveyances or hanging from a skinning pole)
2. Hunter must accompany animal in photo.
3. Blood wiped away, tongue in mouth, bow/quiver covering wound.
4. Commentary; species, where taken, equipment used, etc.

Martin Seeley



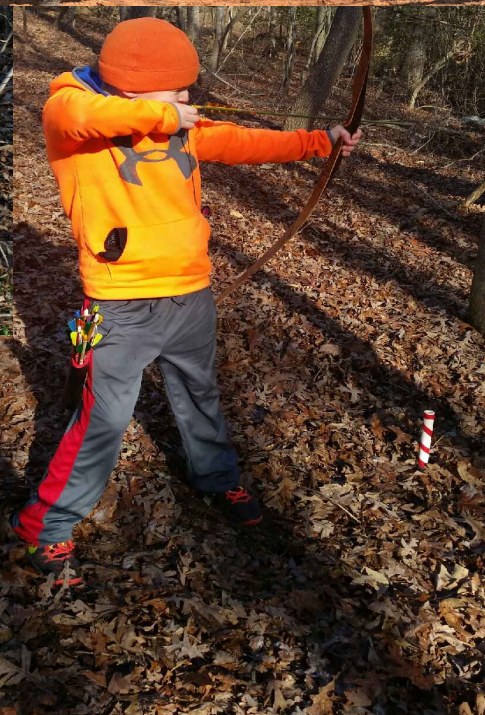
2017 Calendar Of Events

January 14	Herb Reynolds Memorial Shoot, 9am-3pm, Conover
February 4	Club Shoot—Annual Business Meeting, 9am-3pm, Conover
March 4	Club Shoot, 9am-3pm, Conover
March 31– April 1	Club Shoot—Traditional Skills Weekend & Turkey Warm Up, 9am-3pm, Conover
May 6	Club Shoot, 9am-3pm, Conover
June 3	Club Shoot—Kid's Day, 9am-3pm, Conover
July 1	Club Shoot, 9am-3pm, Conover
August 5	Club Shoot, 9am-3pm, Conover
September 2	Club Shoot—Whitetail Warmup, 9am-3pm, Conover
October 7	Club Shoot, 9am-3pm, Conover
TBD	Club Hunt at W. Kerr Scott Reservoir
November 3—4	Club Shoot—Traditional Skills Weekend, 9am—3pm, Conover
December 2	Club Shoot, 9am-3pm , Conover



CTA Happenings...

Photos from the Spring shoots, with over 150 in attendance. As you can see, there were many kids in attendance this spring!



CTA Happenings
cont.....



CTA Happenings cont.....



Tips for Finding Shed Antlers

By Andrew Walters

The time of year has finally arrived when the white-tail buck begins to drop his antlers. The shedding process is caused by a buck's low testosterone levels, the photoperiod, and the natural cycle that begins anew in a few weeks allowing a new set of antlers to begin growth.

While sheds can be seemingly impossible to find, some people have mastered the technique and find many antlers every year. Here are a few things to keep in mind when searching for shed antlers that will increase your chances of success.

The first tip is the most straightforward, and that is to spend your time searching areas where there are actually deer. While this sounds like a nonsensical statement, the deer densities can vary tremendously throughout the state and sometimes there just aren't enough bucks in a given area to drop a substantial amount of sheds. Of course you cannot predict where a deer will travel or drop its antlers, but you can increase your chances of finding antlers when searching areas that are known for producing healthy deer.

The second tip is to scout food sources, bedding areas, and the areas in between the two. Late winter whitetails kick it into conservation mode after the rut and spend much of their time bedding and feeding. By recognizing these areas and scouting them properly, you have once again upped your chances of finding more sheds. Rarely does a shed hunter find two matching sets of antlers on the forest floor side by side, but it does happen. I have found 4 sets of antlers lying not 3 feet from one another. Every one of these sites were in bedding areas and I presume the buck dropped them while resting in his bed. Many people will tell you to look near creeks because the antlers can be jarred loose when a buck jumps. While this sounds good in theory, and probably happens to some extent, I have only found a few sheds on creek banks that I suspect dropped in this fashion.

Last year my golden retriever, Creo, who is trained to find shed antlers, located the right side to a 115" , 8-point buck in a funnel connecting a picked soybean field to a bedding area full of privet and devil's walking sticks. Fallow fields and freshly logged timber are also great places to comb for sheds.



The lack of a forested canopy allows sunlight to penetrate to the forest floor, providing warmth. The weeds and logging slash also block the wind and provide security, making them deer magnets. While these aren't the easiest areas to walk, they can yield huge results before the new growth becomes too dense to walk through. The first year or two after logging are the best times to search these areas.

Now that you know the basic places to search for antlers, let's touch on what you are actually looking for. If you are searching for a full antler lying on the forest floor, you probably won't find many. The key is to search for parts of an antler. The tips of the tines usually will be the first things you see. The actual main beam of the antler may be covered in debris. Lastly, be sure to check out everything that resembles an antler. Even though this will result in much more walking, it could help you find more antlers. I once dismissed a possible shed as a stick. It wasn't until the following year when I noticed the same stick lying in the same location that I became suspicious. It was actually the left side of a small 6 point buck with a broken tine.

In the past 4 years I have found 45 shed antlers. Understanding where to look and what you are looking for will result in more found sheds. It is referred to as shed hunting, so take a hunt-like approach to searching for them. Be meticulous and systematic in order to increase your shed hunting success.

Article reprinted with permission from Andrew Walters. Andrew is a Broker and the Resident Wildlife Scientist for Mossy Oak Properties NC Land and Farms and specializes in selling hunting properties in North Carolina .

Club Improvements.....

We had two hugely successful and productive workdays at the club. It was a "three ring circus" of activity with numerous projects underway around the range and in the club house. It may not be readily apparent when you walk out on the range but we removed nearly 20 cubic yards of old target butt debris. Many thanks to Jeff, Jeff, Logan, Tom, Allen, Rick, Wil, Ken, Jim, Bud and of course our neighbors Zach and Galen.



Jeff Cook finished making our big back stop a permanent installation.

Jeff Holchin and Logan built an abutment wall at the bridge that crosses the creek to keep water from washing it out more. Tom McRary filled in the holes in the road with his tractor.

Rotten target butts removal from the range made easier by Tom McRary and his tractor.



Club Improvements cont.....



Allen, Rick, Ken, Zach and Galen worked on the tree stand.....made some good progress.



The drums of sand moved from beside the trailer and started work on a broad head target pit to practice for hunting season.



Club Improvements cont.....

Arrow racks at each water station for finding loss arrows on those "rare" occasions when a member misses.



Dave & Lori Haggist donated a tool box for our ATV, and Dave permanently mounted it to store all the tools we need to set the range.



One of the big projects for the day was cutting up, splitting and stacking all the firewood that was down on the bank above the fire ring and behind the clubhouse. We should have enough wood for three or four years and the area looks a lot better.



Jim Jordan donated and installed a blower on our wood stove to help push heat out into the room.



Club Improvements cont.....

We have had numerous requests for some outdoor target butts for people to warm up before they go out on the range to shoot, so we cut two lanes and set up two butts for outdoor practice. They still need a little work but we'll get that taken care of soon.



Rick and Allen worked on this frame for the platform for our tree stand.



Jeff Cook and helpers also finished installing the hand rails on the steps up the bank.



Club Improvements cont.....

Mike Kirby acquired and installed our new doors. Boy, are they nice. We still have some trim molding to install on the inside and the front door needs some stucco over the header but they look great and work so well .



Barry Sluder helped get the walls painted.



Many thanks to Ben Worden, Jim Jordan, Barry Sluder, Mark Rickard and Barry Kirby for all their help on this productive day!

Archery Tips.....

I recently discovered a very informative traditional bowhunting website; **The Traditional Bowhunting and Wilderness Podcast**, (tbwpodcast.com)

This site has videos, written articles and verbal podcasts on all aspects of traditional archery and bowhunting.

Another good source to check out is **Twisted Stave Media**. This site is created by Clay Hayes who is a wild-life biologist, primitive bowyer and bowhunter, wildlife film maker and writer. He has produced several short videos on woodsman-ship that are very informative. Two recent videos; **Untamed** and **Ascent** really speak to the heart of the traditional bowhunter. You can also see many of his videos on the Backcountry Hunters and Anglers website.

Submitted by David Haggist

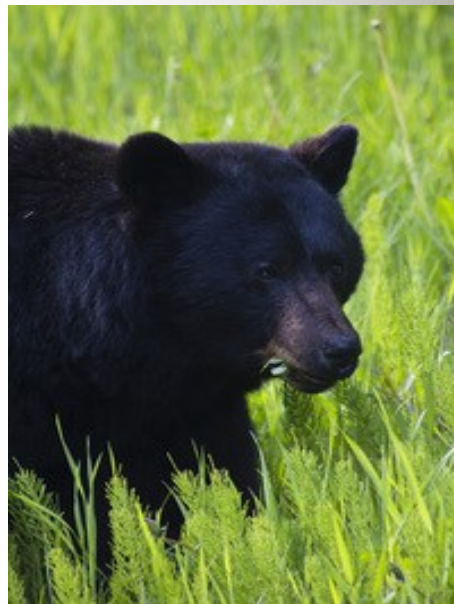
The Hunter's Feast.....

Ozark Bear Roast

- One bear roast, 3-4 pounds
- 8 cloves garlic
- 1 teaspoon salt
- 1/2 teaspoon black pepper
- (6-oz.) cans sliced mushrooms

Marinade:

- 2/3 cup soy sauce
- 1/3 cup vegetable oil
- 1 cup chopped onion
- 1 teaspoon garlic powder
- 1 teaspoon chili powder
- 1 teaspoon ground ginger



With a sharp knife, pierce the roast about two inches deep, and insert a clove of garlic. Do likewise with the remaining garlic cloves. Season the roast with salt and pepper, and place in a large glass baking dish. Mix the marinade ingredients, and pour over the roast. Marinate in the refrigerator 12 to 24 hours, basting with marinade whenever possible. Place the roast in a large Dutch oven or roasting pan. Pour the marinade over the roast. Cook in a 250-degree oven for 4 to 4-1/2 hours, or until the internal temperature is at least 170 degrees. Add mushrooms to the pan the last hour of cooking. Serves 4 to 8.

Source: <http://www.bearhunting.com/pages/bear-hunting/info/cooking-bear-meat>

Trail Cam Corner.....



Archery Humor.....



Photos from the Past.....



Member Shots.....



Dave Haggist with his last day, last hour Javalina.

Charles Suttles and Tony Lail with their Javalina double-team



Jack Rabbits were plentiful!



About our Club Shoots.....

Our monthly Club Shoots are loads of fun! If you like traditional archery, or even if you're just curious as to what traditional archery is all about, you owe it to yourself to check us out. It's an event the whole family can enjoy.

All club shoots are held the first Saturday of the month at the Carolina Traditional Archers Club: 6072 Timber Ridge Rd, Conover, NC. 28613. All shoots run from 9am - 3pm. We set out twenty 3-D animal targets. All the foam targets are in the woods, amongst the trees, which makes for a realistic and very pleasant setting.

Shoots cost \$10 for members and \$20 for non-members. Meal is included with the price of admission and first-time visitors shoot and eat for free!



Submissions.....

Submissions to the Whispering Shaft are always welcomed. Articles must be traditional archery/bowhunting related and whenever possible sent via email. The editor and club officers reserve the right to reject submissions as well as make changes for formatting purposes or grammatical correction.

Submission Deadlines

Spring: March 20th

Summer: June 20th

Fall: September 20th

Winter: December 20th

Photograph Submissions

A Walk in the Woods: (Nature, landscape, wildlife photos)

Photographs submitted cannot contain people, domestic animals or manmade structures. A description of the photograph to include the subject matter and where the photo was taken is needed.

Bragging Wall: (Harvest Photographs)

The animal must be placed in a natural setting (no truck beds, ATV, etc.) and position with blood wiped away and tongue in mouth. The hunter's bow, quiver or vegetation must cover the arrow wound. A description of the photo that includes the species, where the animal was taken, and equipment used is needed.

Submit to: davidhaggist@yahoo.com

amymartin1999@yahoo.com

Stay connected with Social Media....

Follow us on Twitter:

Tweets by @CarolinaArchers



Join our Facebook Page:

Carolina Traditional Archers



Visit our website: www.thecta.org

